



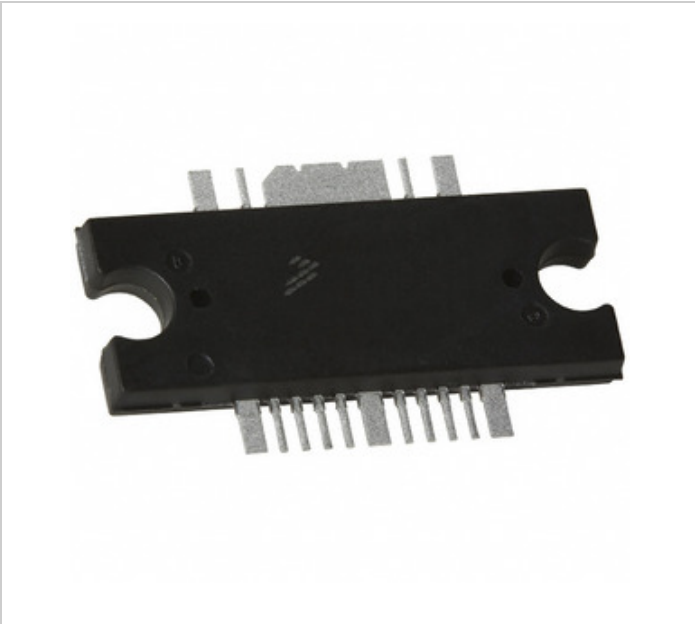
NXP Semiconductors / Freescale

MW4IC2020MBR5

□□□□ □□□:
 □□□□ / □□□:
 □□□□ □□□□□
 □□□□ □□□:
 RoHS □□□

 □□□□□ □□□□

MW4IC2020MBR5
 NXP Semiconductors / Freescale
 IC RF AMP CELLULAR 2.4GHZ TO272
 MW4IC2020MBR5.pdf
 □□□ / RoHS □□□□□
 □□□ □□□
 DHL/Fedex/TNT/UPS/EMS



□□□□ □□□

□□□ □□□□ □□□□ □□□□. □□□□
 □□□□□ □□□□□ □□□□□.

MW4IC2020MBR5 □□□□ □□□□□□□

□□□□ □□□	MW4IC2020MBR5
□□□□	NXP Semiconductors / Freescale
□□□□	IC RF AMP CELLULAR 2.4GHZ TO272
□□□□□□ □□ □□□ / ROHS □□□	□□□□ / RoHS □□□□□
□□ □□	MW4IC2020MBR5.pdf
□□□□ - □□□□□	26V
□□□□ □□□□□	-
□□□□□ □□□□□ □□□	TO-272 WB-16
□□□□□	-
<input type="checkbox"/> RF □□□□	Cellular, GSM, EDGE, CDMA
□□□□	Tape & Reel (TR)
□□□□ / □□□	TO-272-16 Variant, Flat Leads
P1DB	-
□□□ □□□	-
□□□□□□ □□□□ □□□ (□□□□□□)	3 (168 Hours)
□□□□□ □□ □□□ / ROHS □□□	Contains lead / RoHS non-compliant
□□□□ □□□	29dB
□□□□□	1.6GHz ~ 2.4GHz
□□□□ □□□□	RF Amplifier IC Cellular, GSM, EDGE, CDMA 1.6GHz ~ 2.4GHz TO-272 WB-16
□□□□ - □□□□□	80mA

□□□□ □□□□□

NXP Semiconductors / Freescale MW4IC2020MBR5	<input type="checkbox"/> MW4IC2020MBR5 □□□□	MW4IC2020MBR5 □□□□
MW4IC2020MBR5 □□	MW4IC2020MBR5 □□□□	MW4IC2020MBR5 □□□□
<input type="checkbox"/> MW4IC2020MBR5 □□□□ □□□ □□□□	MW4IC2020MBR5 □□□□ □□□□ □□□□	<input type="checkbox"/> MW4IC2020MBR5 □□□ □□□□
MW4IC2020MBR5 □□□□□	MW4IC2020MBR5 □ □□□	NXP Semiconductors / Freescale MW4IC2020MBR5 □ □□□
NXP Semiconductors / Freescale MW4IC2020MBR5	NXP Semiconductors / Freescale □□□□	<input type="checkbox"/> NXP Semiconductors / Freescale □□□□
NXP Semiconductors / Freescale MW4IC2020MBR5	NXP Semiconductors MW4IC2020MBR5	Freescale MW4IC2020MBR5
Freescale Semiconductor - NXP MW4IC2020MBR5	NXP USA Inc. MW4IC2020MBR5	

□□□□ □□□□

<p>MW4IC2230GNBR1 □□□□□: NXP Semiconductors / Freescale □□□□□: IC RF AMP CEL 2.4GHZ TO272 WB-16 □□□□ □□□□ □□: Out stock <input type="button" value="RFQ"/></p>	<p>MW4IC2020GMBR1 □□□□□: NXP Semiconductors / Freescale □□□□□: IC RF AMP CEL 2.4GHZ TO272 WB-16 □□□□ □□□□ □□: Out stock <input type="button" value="RFQ"/></p>
<p>MW4IC2020GMBR5 □□□□□: NXP Semiconductors / Freescale □□□□□: IC RF AMP CEL 2.4GHZ TO272 WB-16 □□□□ □□□□ □□: Out stock <input type="button" value="RFQ"/></p>	<p>MW4IC2230GMBR5 □□□□□: NXP Semiconductors / Freescale □□□□□: IC RF AMP CEL 2.4GHZ TO272 WB-16 □□□□ □□□□ □□: Out stock <input type="button" value="RFQ"/></p>
<p>MW4IC2020MBR1 □□□□□: NXP Semiconductors / Freescale □□□□□: IC RF AMP CELLULAR 2.4GHZ TO272 □□□□ □□□□ □□: Out stock <input type="button" value="RFQ"/></p>	<p>MW4IC2230MBR1 □□□□□: NXP Semiconductors / Freescale □□□□□: IC RF AMP CELLULAR 2.4GHZ TO272 □□□□ □□□□ □□: Out stock <input type="button" value="RFQ"/></p>
<p>MW4IC001NR4 □□□□□: NXP Semiconductors / Freescale □□□□□: IC AMP CEL 800MHZ-2.1GHZ PLD-1.5 □□□□ □□□□ □□: Out stock <input type="button" value="RFQ"/></p>	<p>MW4IC001MR4 □□□□□: NXP Semiconductors / Freescale □□□□□: IC AMP CEL 800MHZ-2.1GHZ PLD-1.5 □□□□ □□□□ □□: Out stock <input type="button" value="RFQ"/></p>
<p>MW4IC2230MBR5 □□□□□: NXP Semiconductors / Freescale □□□□□: IC RF AMP CELLULAR 2.4GHZ TO272 □□□□ □□□□ □□: Out stock <input type="button" value="RFQ"/></p>	<p>MW4IC2230GMBR1 □□□□□: NXP Semiconductors / Freescale □□□□□: IC RF AMP CEL 2.4GHZ TO272 WB-16 □□□□ □□□□ □□: Out stock <input type="button" value="RFQ"/></p>
<p>MW4IC2020NBR1 □□□□□: NXP Semiconductors / Freescale □□□□□: IC RF AMP CELLULAR 2.4GHZ TO272 □□□□ □□□□ □□: Out stock <input type="button" value="RFQ"/></p>	<p>MW4IC2020GNBR1 □□□□□: NXP Semiconductors / Freescale □□□□□: IC RF AMP CEL 2.4GHZ TO272 WB-16 □□□□ □□□□ □□: Out stock <input type="button" value="RFQ"/></p>