

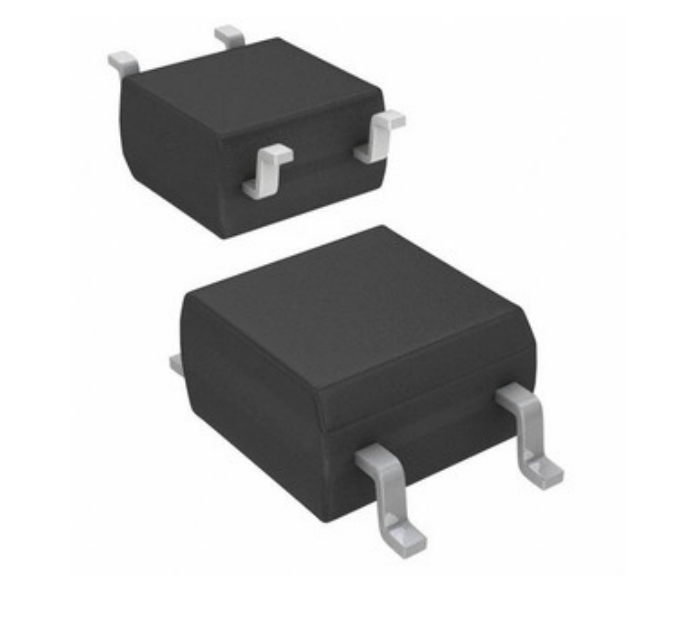


IXYS Integrated Circuits Division

### CPC1009N

- □□□:
- / □□□:
- □□□□□
- □□□:
- RoHS □□□
- 
- □□□□

CPC1009N  
 IXYS Integrated Circuits Division  
 SSR RELAY SPST-NO 150MA 0-100V  
[PDF CPC1009N.pdf](#)  
 □□□□ □□ / RoHS □□□□  
 □□□ □□□  
 DHL/Fedex/TNT/UPS/EMS



□□□ □□□□ □□□□ □□□□. □□□□  
 □□□□□ □□□□□ □□□□□.

□□□□ □□□

#### □ CPC1009N □□□□ □□□□□□

□□□□ □□□	CPC1009N
□□□□	IXYS Integrated Circuits Division
□□□□	SSR RELAY SPST-NO 150MA 0-100V
□□□□□□ □□ □□□ / ROHS □□□	□□□□ □□ / RoHS □□□□
□□ □□	<a href="#">PDF CPC1009N.pdf</a>
□□□□ - □□□	0V ~ 100V
□□□□ - □□□□	1.2VDC
□□□□□□ □□	Gull Wing
□□□□□ □□□□□ □□□	4-SOP
□□□□□	CPC, OptoMOS®
□□□□	Tube
□□□□ / □□□	4-SOP (0.150", 3.81mm)
□□□□ □□□□	AC, DC
□□□□□□ □□□□ (□□□□)	8 Ohms
□□□□□ □□□□	Surface Mount
□□□□□□ □□□□ □□□ (□□□□□□)	3 (168 Hours)
□□□□□ □□□□ □□□□ □□	7 Weeks
□□□□ □□□	150mA
□□□□□ □□ □□□ / ROHS □□□	Lead free / RoHS Compliant
□□□□ □□□□	Solid State Relay SPST-NO (1 Form A) 4-SOP (0.150", 3.81mm)
□□□□	SPST-NO (1 Form A)

#### □□□□ □□□□□

IXYS Integrated Circuits Division CPC1009N	□ CPC1009N □□□□	CPC1009N □□□□
CPC1009N □□	CPC1009N □□□□	CPC1009N □□□
□ CPC1009N □□□□ □□□ □□□□	CPC1009N □□□□ □□□□ □□□□	□ CPC1009N □□□ □□□□
CPC1009N □□□□□	CPC1009N □ □□□	IXYS Integrated Circuits Division CPC1009N □ □□□
IXYS Integrated Circuits Division CPC1009N	IXYS Integrated Circuits Division □□□□	□ IXYS Integrated Circuits Division □□□□
IXYS Integrated Circuits Division CPC1009N		

#### □□□□ □□□□

<p><b>CPC1004N</b>                  □□□□□: IXYS Integrated Circuits Division                  □□□□□: SSR RELAY SPST-NO 300MA 0-100V                  □□□□ □□□□ □□: Out stock</p> <p><b>RFQ</b></p>	<p><b>CPC1004NTR</b>                  □□□□□: IXYS Integrated Circuits Division                  □□□□□: SSR RELAY SPST-NO 300MA 0-100V                  □□□□ □□□□ □□: Out stock</p> <p><b>RFQ</b></p>
<p><b>CPC100AFC</b>                  □□□□□: Honeywell Sensing and Productivity Solutions                  □□□□□: ABS SIG CONDITION UNAMP                  □□□□ □□□□ □□: Out stock</p> <p><b>RFQ</b></p>	<p><b>CPC100AFH</b>                  □□□□□: Honeywell Sensing and Productivity Solutions                  □□□□□: ABS SIG CONDITION UNAMP                  □□□□ □□□□ □□: Out stock</p> <p><b>RFQ</b></p>
<p><b>CPC100GFH</b>                  □□□□□: Honeywell Sensing and Productivity Solutions                  □□□□□: GAUGE VACUUM GAUGE SIG CONDITION                  □□□□ □□□□ □□: Out stock</p> <p><b>RFQ</b></p>	<p><b>CPC1009NTR</b>                  □□□□□: IXYS Integrated Circuits Division                  □□□□□: SSR RELAY SPST-NO 150MA 0-100V                  □□□□ □□□□ □□: Out stock</p> <p><b>RFQ</b></p>
<p><b>CPC1006NTR</b>                  □□□□□: IXYS Integrated Circuits Division                  □□□□□: SSR RELAY SPST-NO 75MA 0-60V                  □□□□ □□□□ □□: Out stock</p> <p><b>RFQ</b></p>	<p><b>CPC1008N</b>                  □□□□□: IXYS Integrated Circuits Division                  □□□□□: SSR RELAY SPST-NO 150MA 0-100V                  □□□□ □□□□ □□: Out stock</p> <p><b>RFQ</b></p>
<p><b>CPC1008NTR</b>                  □□□□□: IXYS Integrated Circuits Division                  □□□□□: SSR RELAY SPST-NO 150MA 0-100V                  □□□□ □□□□ □□: Out stock</p> <p><b>RFQ</b></p>	<p><b>CPC100GFC</b>                  □□□□□: Honeywell Sensing and Productivity Solutions                  □□□□□: GAUGE VACUUM GAUGE SIG CONDITION                  □□□□ □□□□ □□: Out stock</p> <p><b>RFQ</b></p>
<p><b>CPC1006N</b>                  □□□□□: IXYS Integrated Circuits Division                  □□□□□: SSR RELAY SPST-NO 75MA 0-60V                  □□□□ □□□□ □□: Out stock</p> <p><b>RFQ</b></p>	<p><b>CPC100GC</b>                  □□□□□: Honeywell Sensing and Productivity Solutions                  □□□□□: GAUGE VACUUM GAUGE SIG CONDITION                  □□□□ □□□□ □□: Out stock</p> <p><b>RFQ</b></p>

