

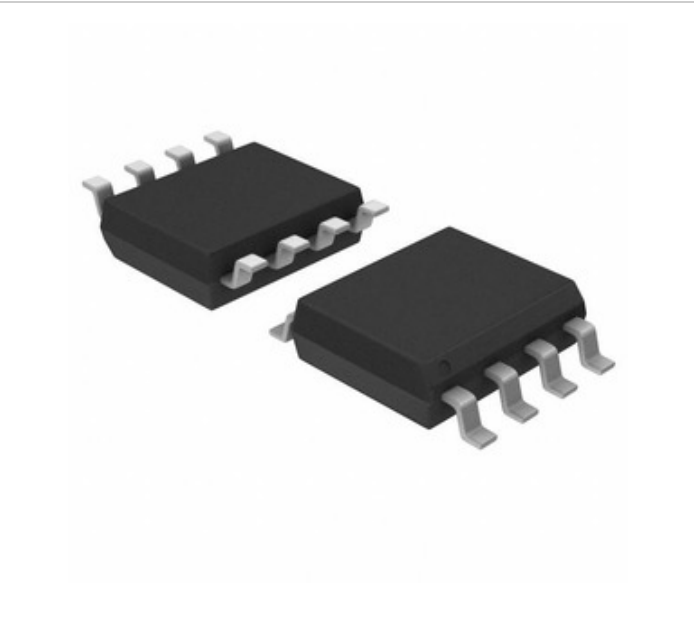


Micrel / Microchip Technology

MIC4424BM-TR

□□□□ □□□:
 □□□□ / □□□:
 □□□□ □□□□□
 □□□□ □□□:
 □ RoHS □□□
 □
 □□□□□ □□□□

MIC4424BM-TR
 Micrel / Microchip Technology
 IC DRIVER MOSFET 3A DUAL 8-SOIC
[MIC4424BM-TR.pdf](#)
 □□□□ / RoHS □□□□□□
 □□□□ □□□□
 DHL/Fedex/TNT/UPS/EMS



□□□□ □□□□ □□□□ □□□□. □□□□
 □□□□□ □□□□□ □□□□□.

□ MIC4424BM-TR □□□□ □□□□□□

| | |
|---------------------------------|--|
| □□□□ □□□ | MIC4424BM-TR |
| □□□□ | Micrel / Microchip Technology |
| □□□□ | IC DRIVER MOSFET 3A DUAL 8-SOIC |
| □□□□□□ □□ □□□□ / ROHS □□□□ | □□□□ / RoHS □□□□□□ |
| □□ □□ | MIC4424BM-TR.pdf |
| □□□□ - □□□□□□ | 4.5 V ~ 18 V |
| □□□□□□ □□□□□□ □□□□ | 8-SOIC |
| □□□□□□ | - |
| □□□□□ / □□□□□□ □□ (□□□□□) | 28ns, 32ns |
| □□□□□ | Tape & Reel (TR) |
| □□□□□ / □□□□ | 8-SOIC (0.154", 3.90mm Width) |
| □□□□ □□□□ | MIC4424BM TR MIC4424BM TR-ND MIC4424BMTR MIC4424BMTR-ND |
| □□□□□ □□□ □□□□ | -40°C ~ 150°C (TJ) |
| □□□□□□□□□□□□ □□□□ | 2 |
| □□□□□□ □□□□ | Surface Mount |
| □□□□□□□ □□□□ □□□□ (□□□□□□□) | 1 (Unlimited) |
| □□□□□□ □□ □□ - VIL, VIH | 0.8V, 2.4V |
| □□□□□□ □□ □□□□ / ROHS □□□□ | Contains lead / RoHS non-compliant |
| □□□□ □□□□ | Non-Inverting |
| □□□□ □□□□ | N-Channel, P-Channel MOSFET |
| □□□□□□ □□□□ | Low-Side |
| □□□□□ □□□□ | Low-Side Gate Driver IC Non-Inverting 8-SOIC |
| □□□□□ - □□□□□ □□□□ (□□□□, □□□□) | 3A, 3A |
| □□□□□ □□□□ | Independent |
| □□□□□□ □□□ □□□□ | MIC4424 |

□□□□ □□□□□□

| | | |
|--|-------------------------------------|---|
| Micrel / Microchip Technology MIC4424BM-TR | □ MIC4424BM-TR □□□□□ | MIC4424BM-TR □□□□□ |
| MIC4424BM-TR □□□ | MIC4424BM-TR □□□□□ | MIC4424BM-TR □□□□ |
| □ MIC4424BM-TR □□□□ □□□□ □□□□ | MIC4424BM-TR □□□□ □□□□ □□□□ | □ MIC4424BM-TR □□□□ □□□□ |
| MIC4424BM-TR □□□□□□ | MIC4424BM-TR □ □□□□ | Micrel / Microchip Technology MIC4424BM-TR □ □□□□ |
| Micrel / Microchip Technology MIC4424BM-TR | Micrel / Microchip Technology □□□□□ | □ Micrel / Microchip Technology □□□□□ |
| Micrel / Microchip Technology MIC4424BM-TR | Microchip Technology MIC4424BM-TR | Roving Networks / Microchip Technology MIC4424BM-TR |

□□□□ □□□□

| | |
|---|---|
| <p>MIC4424BM □□□□□: Micrel / Microchip Technology □□□□□: IC DRIVER MOSFET 3A DUAL 8SOIC □□□□ □□□□ □□: Out stock</p> <p>RFQ</p> | <p>MIC4424BWM TR □□□□□: Micrel / Microchip Technology □□□□□: IC DRIVER MOSFET 3A DUAL 16-SOIC □□□□ □□□□ □□: Out stock</p> <p>RFQ</p> |
| <p>MIC4424BWM □□□□□: Micrel / Microchip Technology □□□□□: IC DRIVER MOSFET 3A DUAL 16-SOIC □□□□ □□□□ □□: Out stock</p> <p>RFQ</p> | <p>MIC4423YWM □□□□□: Micrel / Microchip Technology □□□□□: IC DRIVER MOSFET 3A DUAL 16-SOIC □□□□ □□□□ □□: Out stock</p> <p>RFQ</p> |
| <p>MIC4423ZWM □□□□□: Micrel / Microchip Technology □□□□□: IC DRIVER MOSFET 3A DUAL 16-SOIC □□□□ □□□□ □□: Out stock</p> <p>RFQ</p> | <p>MIC4424BN □□□□□: Micrel / Microchip Technology □□□□□: IC DRIVER MOSFET 3A DUAL 8DIP □□□□ □□□□ □□: Out stock</p> <p>RFQ</p> |
| <p>MIC4423ZN □□□□□: Micrel / Microchip Technology □□□□□: IC DRIVER MOSFET 3A DUAL 8DIP □□□□ □□□□ □□: 104 pcs</p> <p>RFQ</p> | <p>MIC4424CWM TR □□□□□: Micrel / Microchip Technology □□□□□: IC DRIVER MOSFET 3A DUAL 16-SOIC □□□□ □□□□ □□: Out stock</p> <p>RFQ</p> |
| <p>MIC4423ZWM-TR □□□□□: Micrel / Microchip Technology □□□□□: IC DRIVER MOSFET 3A DUAL 16-SOIC □□□□ □□□□ □□: Out stock</p> <p>RFQ</p> | <p>MIC4423YWM-TR □□□□□: Micrel / Microchip Technology □□□□□: IC DRIVER MOSFET 3A DUAL 16-SOIC □□□□ □□□□ □□: Out stock</p> <p>RFQ</p> |
| <p>MIC4424CN □□□□□: Micrel / Microchip Technology □□□□□: IC DRIVER MOSFET 3A DUAL 8DIP □□□□ □□□□ □□: Out stock</p> <p>RFQ</p> | <p>MIC4424CWM □□□□□: Micrel / Microchip Technology □□□□□: IC DRIVER MOSFET 3A DUAL 16-SOIC □□□□ □□□□ □□: Out stock</p> <p>RFQ</p> |