

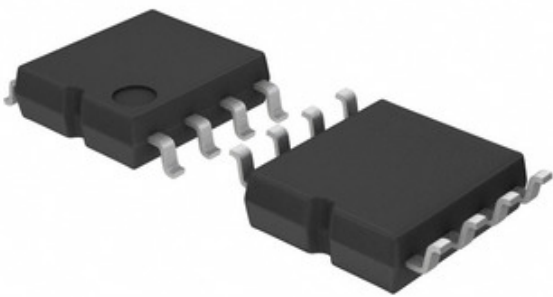


LAPIS Semiconductor

LM2904F-E2

□□□□ □□□:
 □□□□ / □□□:
 □□□□ □□□□□
 □□□□ □□□:
 □ RoHS □□□
 □
 □□□□ □□□□

LM2904F-E2
 LAPIS Semiconductor
 GROUND SENSE OPERATIONAL AMPLIFI
[PDF](#) 1.LM2904F-E2.pdf
[PDF](#) 2.LM2904F-E2.pdf
 □□□ □□ / RoHS □□□□
 □□□ □□□
 DHL/Fedex/TNT/UPS/EMS



□□□□ □□□

□□□ □□□□ □□□□ □□□□. □□□□
 □□□□□ □□□□□ □□□□□.

□ LM2904F-E2 □□□□ □□□□□□

□□□□ □□□	LM2904F-E2
□□□□	LAPIS Semiconductor
□□□□	GROUND SENSE OPERATIONAL AMPLIFI
□□□□□□ □□ □□□ / ROHS □□□	□□□ □□ / RoHS □□□□
□□ □□	PDF 1.LM2904F-E2.pdf PDF 2.LM2904F-E2.pdf
□□□□-□□□□□, □□□ / □□□□□ (±)	3 V ~ 32 V
□□□□ - □□□ □□□□	1mV
□□□□□ □□□□□ □□□	8-SOP
□□□□□□□ □□□	0.3 V/μs
□□□□□	-
□□□□	Cut Tape (CT)
□□□□ / □□□□	8-SOIC (0.173", 4.40mm Width)
□□□□ □□□□	-
□□□□ □□□	LM2904F-E2CT
□□□□ □□□ □□□	-40°C ~ 125°C
□□□□□□ □□□	2
□□□□□ □□□□	Surface Mount
□□□□□□ □□□□ □□□ (□□□□□□)	1 (Unlimited)
□□□□□ □□□□ □□□□ □□	17 Weeks
□□□□□ □□ □□□ / ROHS □□□	Lead free / RoHS Compliant
□□□□□ □□□ □□□□□□ □□□□ □□□	0.8MHz
□□□□ □□□□	General Purpose Amplifier 2 Circuit 8-SOP
□□□□ - □□□□□	0.6mA
□□□□ - □□□□ □□□	20nA
□□□□□ □□□□	General Purpose

□□□□ □□□□□

LAPIS Semiconductor LM2904F-E2	□ LM2904F-E2 □□□□	LM2904F-E2 □□□□
LM2904F-E2 □□	LM2904F-E2 □□□□	LM2904F-E2 □□□
□ LM2904F-E2 □□□□ □□□ □□□□	LM2904F-E2 □□□□ □□□□ □□□□	□ LM2904F-E2 □□□ □□□□
LM2904F-E2 □□□□□	LM2904F-E2 □ □□□	LAPIS Semiconductor LM2904F-E2 □ □□□
LAPIS Semiconductor LM2904F-E2	LAPIS Semiconductor □□□□	□ LAPIS Semiconductor □□□□
LAPIS Semiconductor LM2904F-E2	Kionix Inc. LM2904F-E2	Rohm Semiconductor LM2904F-E2

□□□□ □□□□

<p>LM2904DT □□□□: LAPIS Semiconductor □□□□: IC OPAMP GP 1.1MHZ 8SO □□□□ □□□□ □□: 235020 pcs RFQ</p>	<p>LM2904ITP/NOPB □□□□: N/A □□□□: IC OPAMP GP 1MHZ 8MICROSMD □□□□ □□□□ □□: 126379 pcs RFQ</p>
<p>LM2904DRG4 □□□□: N/A □□□□: IC OPAMP GP 700KHZ 8SOIC □□□□ □□□□ □□: 665646 pcs RFQ</p>	<p>LM2904ITPX/NOPB □□□□: N/A □□□□: IC OPAMP GP 1MHZ 8MICROSMD □□□□ □□□□ □□: 161045 pcs RFQ</p>
<p>LM2904DRE4 □□□□: N/A □□□□: IC OPAMP GP 700KHZ 8SOIC □□□□ □□□□ □□: 665623 pcs RFQ</p>	<p>LM2904FVJ-E2 □□□□: LAPIS Semiconductor □□□□: GROUND SENSE OPERATIONAL AMPLIFI □□□□ □□□□ □□: 362662 pcs RFQ</p>
<p>LM2904EDR2G □□□□: AMI Semiconductor / ON Semiconductor □□□□: IC OPAMP DUAL LOW PWR 8SOIC □□□□ □□□□ □□: 836951 pcs RFQ</p>	<p>LM2904FJ-E2 □□□□: LAPIS Semiconductor □□□□: GROUND SENSE OPERATIONAL AMPLIFI □□□□ □□□□ □□: 447926 pcs RFQ</p>
<p>LM2904FVM-GTR □□□□: LAPIS Semiconductor □□□□: GROUND SENSE OPERATIONAL AMPLIFI □□□□ □□□□ □□: 364505 pcs RFQ</p>	<p>LM2904DRG3 □□□□: N/A □□□□: IC OPAMP GP 700KHZ 8SOIC □□□□ □□□□ □□: 650387 pcs RFQ</p>
<p>LM2904DT □□□□: STMicroelectronics □□□□: IC OPAMP GP 1.1MHZ 8SO □□□□ □□□□ □□: 565209 pcs RFQ</p>	<p>LM2904FV-E2 □□□□: LAPIS Semiconductor □□□□: GROUND SENSE OPERATIONAL AMPLIFI □□□□ □□□□ □□: 466951 pcs RFQ</p>