



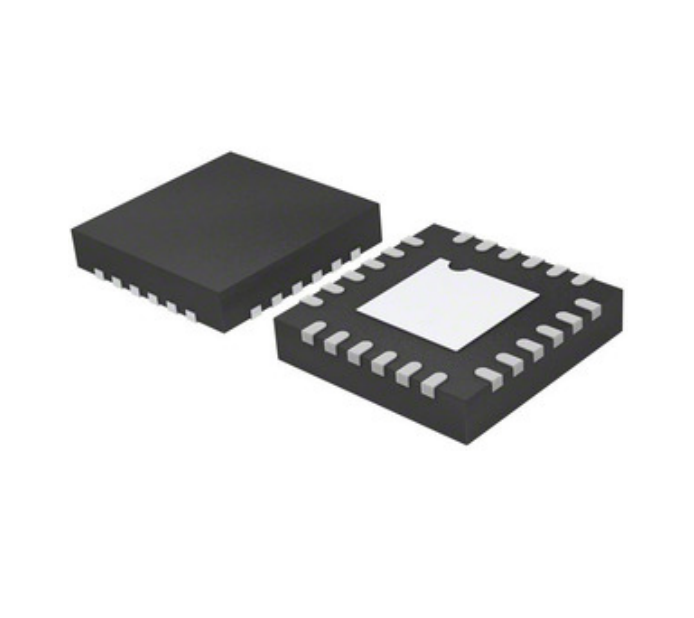
ADI (Analog Devices, Inc.)

ADGS5414BCPZ

□□□□ □□□□:
 □□□□ / □□□□:
 □□□□ □□□□□□
 □□□□ □□□□:
 RoHS □□□□

 □□□□□□ □□□□

ADGS5414BCPZ
 ADI (Analog Devices, Inc.)
 IC SWITCH SPST OCTAL 24-LFCSP
[PDF ADGS5414BCPZ.pdf](#)
 RoHS □□□□ □□□□
 □□□□ □□□□
 DHL/Fedex/TNT/UPS/EMS



□□□□ □□□□ □□□□ □□□□. □□□□
 □□□□□□ □□□□□□ □□□□□□.

□□□□ □□□□

□ ADGS5414BCPZ □□□□ □□□□□□

□□□□ □□□□	ADGS5414BCPZ
□□□□	ADI (Analog Devices, Inc.)
□□□□	IC SWITCH SPST OCTAL 24-LFCSP
□□□□□□ □□ □□□□ / ROHS □□□□	□□□□ □□□□ / RoHS □□□□□□
□□ □□	PDF ADGS5414BCPZ.pdf
□□□□ - □□□□□□, □□□□ (V +)	9 V ~ 40 V
□□□□-□□□□□□, □□□□□□ (□)	±9 V ~ 22 V
□□□□ □□□□ (□□, □□) (□□□□)	-
□□□□□□□□□□ □□□□	SPST - NO
□□□□□□ □□□□□□ □□□□	24-LFCSP-VQ (4x4)
□□□□□□	-
□□□□	Tray
□□□□ / □□□□	24-VFQFN Exposed Pad, CSP
□□□□ □□□□ □□□□	-40°C ~ 125°C (TA)
□□□□□□ □□□□ (□□□□)	-
□□□□□□ □□□□	8
□□□□ □□□□ / □□□□□□□□□□ □□□□	1:1
□□□□□□ □□□□ □□□□ (□□□□□□)	3 (168 Hours)
□□□□□□ □□□□ □□□□ □□	7 Weeks
□□□□□□ □□ □□□□ / ROHS □□□□	Lead free / RoHS Compliant
□□□□ □□□□	8 Circuit IC Switch 1:1 24-LFCSP-VQ (4x4)
□□□□ - □□□□ (IS (□□□□)) (□□□□)	-
CROSSTALK	-
□□□□ □□□□□□	-
□□□□-□□-□□ □□□□ (ΔRON)	-
□□□□ □□□□ (CS (□□□□), □□ (□□□□))	-
□□□□□□ □□□□ □□□□	ADGS5414
-3 □□ □□□□□□□□ □□□□	-

□□□□ □□□□□□

ADI (Analog Devices, Inc.) ADGS5414BCPZ	□ ADGS5414BCPZ □□□□	ADGS5414BCPZ □□□□
ADGS5414BCPZ □□	ADGS5414BCPZ □□□□	ADGS5414BCPZ □□□□
□ ADGS5414BCPZ □□□□ □□□□ □□□□	ADGS5414BCPZ □□□□ □□□□ □□□□	□ ADGS5414BCPZ □□□□ □□□□
ADGS5414BCPZ □□□□□□	ADGS5414BCPZ □ □□□	ADI (Analog Devices, Inc.) ADGS5414BCPZ □ □□□
ADI (Analog Devices, Inc.) ADGS5414BCPZ	ADI (Analog Devices, Inc.) □□□□	□ ADI (Analog Devices, Inc.) □□□□
ADI (Analog Devices, Inc.) ADGS5414BCPZ	AD ADGS5414BCPZ	ADI (Analog Devices, Inc.) ADGS5414BCPZ
Analog Devices Inc. ADGS5414BCPZ	Analog Devices, Inc. ADGS5414BCPZ	

□□□□ □□□□

<p>ADGS1408BCPZ □□□□□□: ADI (Analog Devices, Inc.) □□□□□□: SPI INTERFACE LOW RON 8:1 MUX, 1 □□□□ □□□□ □□: 4 pcs</p> <p>RFQ</p>	<p>ADGS1612BCPZ □□□□□□: ADI (Analog Devices, Inc.) □□□□□□: IC SWITCH SPST QUAD 24-LFCSP □□□□ □□□□ □□: 32 pcs</p> <p>RFQ</p>
<p>ADGS1409BCPZ □□□□□□: ADI (Analog Devices, Inc.) □□□□□□: SPI INTERFACE LOW RON DIFF 4:1 M □□□□ □□□□ □□: 1 pcs</p> <p>RFQ</p>	<p>ADGS5412BCPZ-RL7 □□□□□□: ADI (Analog Devices, Inc.) □□□□□□: IC SWITCH QUAD SPST SPI 24LFCSP □□□□ □□□□ □□: Out stock</p> <p>RFQ</p>
<p>ADGS1612BCPZ-RL7 □□□□□□: ADI (Analog Devices, Inc.) □□□□□□: SPI LOW RON 4XSPST □□□□ □□□□ □□: Out stock</p> <p>RFQ</p>	<p>ADGS1409BCPZ-RL7 □□□□□□: ADI (Analog Devices, Inc.) □□□□□□: SPI INTERFACE LOW RON DIFF 4:1 M □□□□ □□□□ □□: Out stock</p> <p>RFQ</p>
<p>ADGS1412BCPZ-RL7 □□□□□□: ADI (Analog Devices, Inc.) □□□□□□: IC SWITCH SPST QUAD 24-LFCSP □□□□ □□□□ □□: Out stock</p> <p>RFQ</p>	<p>ADGS5414BCPZ-RL7 □□□□□□: ADI (Analog Devices, Inc.) □□□□□□: SPI LATCHUP PROOF 8XSPST □□□□ □□□□ □□: Out stock</p> <p>RFQ</p>
<p>ADGS5412BCPZ □□□□□□: ADI (Analog Devices, Inc.) □□□□□□: IC SWITCH QUAD SPST SPI 24LFCSP □□□□ □□□□ □□: 55 pcs</p> <p>RFQ</p>	<p>ADGS1408BCPZ-RL7 □□□□□□: ADI (Analog Devices, Inc.) □□□□□□: SPI INTERFACE LOW RON 8:1 MUX, 1 □□□□ □□□□ □□: Out stock</p> <p>RFQ</p>
<p>ADGS1212BCPZ-RL7 □□□□□□: ADI (Analog Devices, Inc.) □□□□□□: IC SWITCH SPST QUAD 24-LFCSP □□□□ □□□□ □□: Out stock</p> <p>RFQ</p>	<p>ADGS1412BCPZ □□□□□□: ADI (Analog Devices, Inc.) □□□□□□: IC SWITCH SPST QUAD 24-LFCSP □□□□ □□□□ □□: 588 pcs</p> <p>RFQ</p>

