



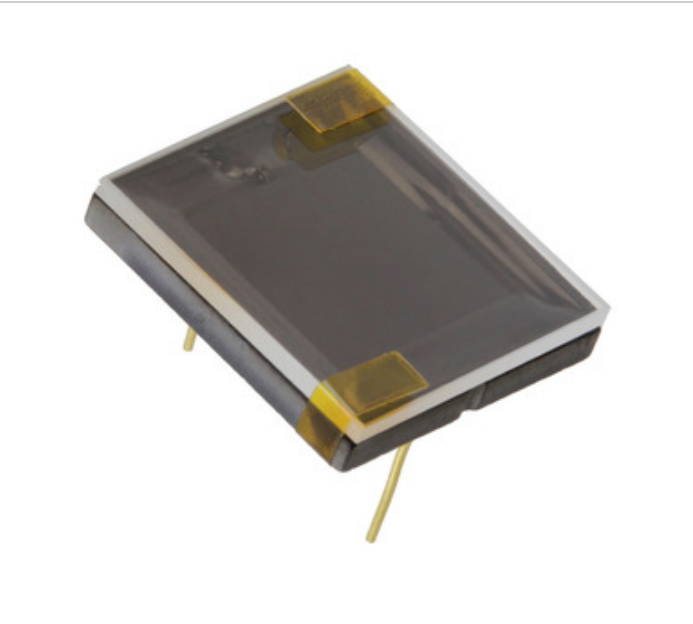
Opto Diode Corporation

AXUV100TI/C2

□□□□ □□□:
 □□□□ / □□□:
 □□□□ □□□□□
 □□□□ □□□:
 RoHS □□□

 □□□□□ □□□□

AXUV100TI/C2
 Opto Diode Corporation
 SENSOR ELECTRON DETECTION 100MM
 AXUV100TI/C2.pdf
 □□□ □□ / RoHS □□□□
 □□□ □□□
 DHL/Fedex/TNT/UPS/EMS



□□□□ □□□

□□□ □□□□ □□□□ □□□□. □□□□
 □□□□□ □□□□□ □□□□□.

□ AXUV100TI/C2 □□□□ □□□□□□

| | |
|------------------------------|---------------------------------|
| □□□□ □□□ | AXUV100TI/C2 |
| □□□□ | Opto Diode Corporation |
| □□□□ | SENSOR ELECTRON DETECTION 100MM |
| □□□□□□ □□ □□□ / ROHS □□□ | □□□ □□ / RoHS □□□□ |
| □□ □□ | AXUV100TI/C2.pdf |
| □□□□ □□□□ | - |
| □□□□ - □□□ □□□□ (□□□) (□□□□) | 10V |
| □□□□ □□□ | - |
| SPECTRAL RANGE | - |
| □□□□□ | AXUV |
| □□□□□ @ NM | - |
| □□□□ □□ | - |
| □□□□ | Bulk |
| □□□ / □□□ | - |
| □□□ □□□ | 958-1023 ODD-AXU-019 |
| □□□□ □□□ □□□ | -10°C ~ 40°C |
| □□□□□ □□□□ | Through Hole |
| □□□□□□ □□□□ □□□ (□□□□□□) | 1 (Unlimited) |
| □□□□□ □□□□ □□□□ □□ | 16 Weeks |
| □□□□□ □□ □□□ / ROHS □□□ | Lead free / RoHS Compliant |
| □□□□□ □□□□ | - |
| □□□□ □□□□ | Photodiode |
| □□□□ - □□□ (TYP) | - |
| □□□ - □□□□□ | - |
| □□□ □□□□ | 100mm ² |

□□□□ □□□□□

| | | |
|-------------------------------------|------------------------------|---|
| Opto Diode Corporation AXUV100TI/C2 | □ AXUV100TI/C2 □□□□ | AXUV100TI/C2 □□□□ |
| AXUV100TI/C2 □□ | AXUV100TI/C2 □□□□ | AXUV100TI/C2 □□□ |
| □ AXUV100TI/C2 □□□□ □□□ □□□□ | AXUV100TI/C2 □□□□ □□□□ □□□□ | □ AXUV100TI/C2 □□□ □□□□ |
| AXUV100TI/C2 □□□□□ | AXUV100TI/C2 □ □□□ | Opto Diode Corporation AXUV100TI/C2 □ □□□ |
| Opto Diode Corporation AXUV100TI/C2 | Opto Diode Corporation □□□□ | □ Opto Diode Corporation □□□□ |
| Opto Diode Corporation AXUV100TI/C2 | Opto Diode Corp AXUV100TI/C2 | |

□□□□ □□□□

| | |
|--|--|
| <p>AXUV100AL □□□□□: Opto Diode Corporation □□□□: SENSOR ELECTRON DETECTION 100MM □□□□ □□□□ □□: 19 pcs RFQ</p> | <p>AXUV100CS □□□□□: Opto Diode Corporation □□□□: CER SOCKET FOR DIODE □□□□ □□□□ □□: 117 pcs RFQ</p> |
| <p>AXUV20ACS □□□□□: Opto Diode Corporation □□□□: SOCKET CERM FOR AXUV20A/UVG20S □□□□ □□□□ □□: 8 pcs RFQ</p> | <p>AXUV576C □□□□□: Opto Diode Corporation □□□□: PHOTODIODE ELECTRON DET 576MM2 □□□□ □□□□ □□: Out stock RFQ</p> |
| <p>AXUV20A □□□□□: Opto Diode Corporation □□□□: PHOTODIODE ELECTRON DETECTOR 5MM □□□□ □□□□ □□: Out stock RFQ</p> | <p>AXUV100 □□□□□: Opto Diode Corporation □□□□: SENSOR ELECTRON DETECTION □□□□ □□□□ □□: Out stock RFQ</p> |
| <p>AXUV63HS1 □□□□□: Opto Diode Corporation □□□□: SENSOR ELECTRON DETECTION 9MM □□□□ □□□□ □□: Out stock RFQ</p> | <p>AXUV16ELCS □□□□□: Opto Diode Corporation □□□□: SOCKET CERM FOR AXUV16ELG IRD □□□□ □□□□ □□: Out stock RFQ</p> |
| <p>AXUV20ELG □□□□□: Opto Diode Corporation □□□□: SENSOR ELECTRON DETECTION 3MM □□□□ □□□□ □□: Out stock RFQ</p> | <p>AXUV20HS1 □□□□□: Opto Diode Corporation □□□□: PHOTODIODE ELECTRON DETECTOR 5MM □□□□ □□□□ □□: 43 pcs RFQ</p> |
| <p>AXUV100G □□□□□: Opto Diode Corporation □□□□: SENSOR ELECTRON DETECTION □□□□ □□□□ □□: 37 pcs RFQ</p> | <p>AXUV16 ELG □□□□□: Opto Diode Corporation □□□□: SENSOR ELECTRON DETECTION 40DIP □□□□ □□□□ □□: Out stock RFQ</p> |

