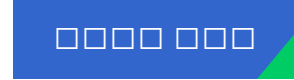
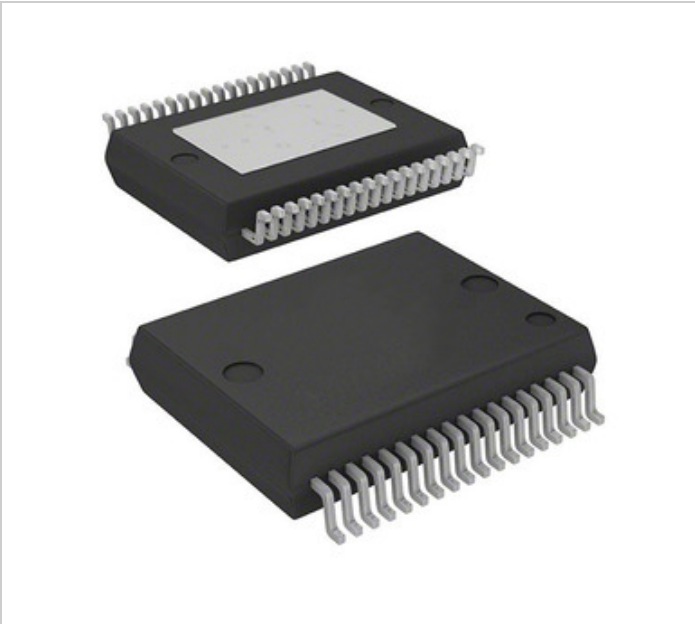


STA559BWSTR

□□□□ □□□□:
 □□□□ / □□□□:
 □□□□ □□□□□□
 □□□□ □□□□:
 RoHS □□□□

 □□□□□□ □□□□

STA559BWSTR
 STMicroelectronics
 IC DAS 2.1 CHANNEL POWERSO36
[PDF STA559BWSTR.pdf](#)
 □□□□ □□ / RoHS □□□□
 □□□□ □□□□
 DHL/Fedex/TNT/UPS/EMS



□□□□ □□□□ □□□□ □□□□. □□□□
 □□□□□□ □□□□□□ □□□□□□.

□ STA559BWSTR □□□□ □□□□□□

□□□□ □□□□	STA559BWSTR
□□□□	STMicroelectronics
□□□□	IC DAS 2.1 CHANNEL POWERSO36
□□□□□□ □□ □□□□ / ROHS □□□□	□□□□ □□□□ / RoHS □□□□
□□ □□	PDF STA559BWSTR.pdf
□□□□ - □□□□□□	4.5 V ~ 16 V
□□□□□□ □□□□□□ □□□□	PowerSSO-36 EPD
□□□□□□	Full Flexible Amplification
□□□□□□	Sound Terminal™
□□□□	Tape & Reel (TR)
□□□□ / □□□□	36-BFSOP (0.295", 7.50mm Width) Exposed Pad
□□□□ □□□□ □□□□	-20°C ~ 70°C (TA)
□□□□□□ □□□□	2
□□□□□□□□ □□□□ □□□□ (□□□□□□□□)	3 (168 Hours)
□□□□□□ □□□□ □□□□ □□	50 Weeks
□□□□□□ □□ □□□□ / ROHS □□□□	Lead free / RoHS Compliant
□□□□□□	I ² C, I ² S
□□□□□□	Fully Integrated Processor
□□□□□□ □□□□	Audio Fully Integrated Processor 2 Channel PowerSSO-36 EPD
□□□□□□ □□□□ □□□□	STA559
□□□□□□□□□□	Pre-Amplifier

□□□□ □□□□□□

STMicroelectronics STA559BWSTR	□ STA559BWSTR □□□□	STA559BWSTR □□□□
STA559BWSTR □□	STA559BWSTR □□□□	STA559BWSTR □□□□
□ STA559BWSTR □□□□ □□□□ □□□□	STA559BWSTR □□□□ □□□□ □□□□	□ STA559BWSTR □□□□ □□□□
STA559BWSTR □□□□□□	STA559BWSTR □ □□□	STMicroelectronics STA559BWSTR □ □□□
STMicroelectronics STA559BWSTR	STMicroelectronics □□□□	□ STMicroelectronics □□□□
STMicroelectronics STA559BWSTR		

□□□□ □□□□

<p>STA541SA □□□□□□: STMicroelectronics □□□□□□: IC AMP BTL DUAL 2X20W 15CLIPWATT □□□□ □□□□ □□: Out stock RFQ</p>	<p>STA559BW13TR □□□□□□: STMicroelectronics □□□□□□: IC DAS 2.1 CHANNEL POWERSO36 □□□□ □□□□ □□: 794 pcs RFQ</p>
<p>STA543SA □□□□□□: STMicroelectronics □□□□□□: IC AMP TRPL DC VOL CTRLR CLIPWATT □□□□ □□□□ □□: Out stock RFQ</p>	<p>STA575 □□□□□□: STMicroelectronics □□□□□□: IC AMP AUDIO PWR AB 27FLEXIWATT □□□□ □□□□ □□: Out stock RFQ</p>
<p>STA550 □□□□□□: STMicroelectronics □□□□□□: IC AMP AUDIO PWR 70W 27FLEXIWATT □□□□ □□□□ □□: Out stock RFQ</p>	<p>STA540 □□□□□□: STMicroelectronics □□□□□□: IC AMP AUD DUAL/QUAD MULTIWATT15 □□□□ □□□□ □□: 586 pcs RFQ</p>
<p>STA540SAN □□□□□□: STMicroelectronics □□□□□□: IC AUDIO AMP 4 X 10W CLIPWATT15 □□□□ □□□□ □□: Out stock RFQ</p>	<p>STA5630TR □□□□□□: STMicroelectronics □□□□□□: IC RF FRONT END GPS 32VFQFPN □□□□ □□□□ □□: Out stock RFQ</p>
<p>STA5620 □□□□□□: STMicroelectronics □□□□□□: IC RF FRONT END RECEIVER 32VFQFP □□□□ □□□□ □□: Out stock RFQ</p>	<p>STA660 □□□□□□: STMicroelectronics □□□□□□: AUTOMOTIVE DIGITAL □□□□ □□□□ □□: Out stock RFQ</p>
<p>STA5630 □□□□□□: STMicroelectronics □□□□□□: IC RF FRONT END GPS 32VFQFPN □□□□ □□□□ □□: Out stock RFQ</p>	<p>STA5620TR □□□□□□: STMicroelectronics □□□□□□: IC RF FRONT END RECEIVER 32VFQFP □□□□ □□□□ □□: Out stock RFQ</p>

