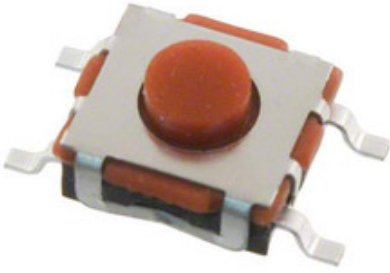


E-Switch

TL6700AF260QG

□□□□ □□□□:
 □□□□ / □□□□:
 □□□□ □□□□□□
 □□□□ □□□□:
 □ RoHs □□□□
 □
 □□□□□ □□□□

TL6700AF260QG
 E-Switch
 SWITCH TACTILE SPST-NO 0.05A 12V
[PDF 1.TL6700AF260QG.pdf](#)
[PDF 2.TL6700AF260QG.pdf](#)
 □□□□ □□ / RoHS □□□□
 □□□ □□□
 DHL/Fedex/TNT/UPS/EMS



□□□□ □□□□

□□□ □□□□ □□□□ □□□□. □□□□
 □□□□□ □□□□□ □□□□□.

□ TL6700AF260QG □□□□ □□□□□□

□□□□ □□□□	TL6700AF260QG
□□□□	E-Switch
□□□□	SWITCH TACTILE SPST-NO 0.05A 12V
□□□□□□ □□ □□□□ / ROHS □□□□	□□□□ □□□□ / RoHS □□□□□□
□□ □□	PDF 1.TL6700AF260QG.pdf PDF 2.TL6700AF260QG.pdf
□□□□□□ □□	Gull Wing
□□ □□□□	0.35mm
□□□□ □□□□	Off-Mom
□□□□□□	TL6700
□□□□	Tape & Reel (TR)
□□□□	6.90mm x 6.20mm
□□□□ □□□□	EG4387TR
□□□□ □□□□ □□□□	-20°C ~ 70°C
□□□□ □□□□	260gf
□□□□□□ □□□□	Surface Mount
□□□□□□ □□□□ □□□□ (□□□□□□□□)	1 (Unlimited)
□□□□□□ □□□□	100,000 Cycles
□□□□□□ □□□□ □□□□ □□	11 Weeks
□□□□□□ □□ □□□□ / ROHS □□□□	Lead free / RoHS Compliant
□□□□□□ □□□□	-
□□□□□□ □□□□ (□□□□□)	-
□□□□□□ □□□□□□, □□□□	-
□□□□□	Non-Illuminated
□□ □□□□ □□□□	Process Sealed
□□□□ □□□□	Tactile Switch SPST-NO Top Actuated Surface Mount
□□□□□□ □□□□ @ □□□□	0.05A @ 12VDC
□□□□□	SPST-NO
□□□□□□□□ □□□□	Standard
□□□□□□ □□□□	Top Actuated
□□□□□□ □□□□	Silicon Rubber
□□□□ □□□□, □□ □□	-
□□□□□□□□ □□□□□□ PCB, □□□□□	3.40mm

□□□□ □□□□□□

E-Switch TL6700AF260QG	□ TL6700AF260QG □□□□	TL6700AF260QG □□□□
TL6700AF260QG □□	TL6700AF260QG □□□□	TL6700AF260QG □□□□
□ TL6700AF260QG □□□□ □□□□ □□□□	TL6700AF260QG □□□□ □□□□ □□□□	□ TL6700AF260QG □□□□ □□□□
TL6700AF260QG □□□□□□	TL6700AF260QG □ □□□□	E-Switch TL6700AF260QG □ □□□□
E-Switch TL6700AF260QG	E-Switch □□□□□	□ E-Switch □□□□□
E-Switch TL6700AF260QG		

□□□□ □□□□

<p>TL6700AF160QJ □□□□□: E-Switch □□□□□: SWITCH TACTILE SPST-NO 0.05A 12V □□□□□ □□□□□ □□: Out stock RFQ</p>	<p>TL6700NF260QJ □□□□□: E-Switch □□□□□: SWITCH TACTILE SPST-NO 0.05A 12V □□□□□ □□□□□ □□: Out stock RFQ</p>
<p>TL6304NF300QJ □□□□□: E-Switch □□□□□: SWITCH TACTILE SPST-NO 0.05A 12V □□□□□ □□□□□ □□: Out stock RFQ</p>	<p>TL6304BF300QG □□□□□: E-Switch □□□□□: SWITCH TACTILE SPST-NO 0.05A 12V □□□□□ □□□□□ □□: Out stock RFQ</p>
<p>TL6700NF260QG □□□□□: E-Switch □□□□□: SWITCH TACTILE SPST-NO 0.05A 12V □□□□□ □□□□□ □□: Out stock RFQ</p>	<p>TL6700NF160QG □□□□□: E-Switch □□□□□: SWITCH TACTILE SPST-NO 0.05A 12V □□□□□ □□□□□ □□: Out stock RFQ</p>
<p>TL6700AF160QG □□□□□: E-Switch □□□□□: SWITCH TACTILE SPST-NO 0.05A 12V □□□□□ □□□□□ □□: Out stock RFQ</p>	<p>TL6304CF300QG □□□□□: E-Switch □□□□□: SWITCH TACTILE SPST-NO 0.05A 12V □□□□□ □□□□□ □□: Out stock RFQ</p>
<p>TL6330AF200Q □□□□□: E-Switch □□□□□: SMT MINIATURE IP67 2.80MM X 4.60 □□□□□ □□□□□ □□: Out stock RFQ</p>	<p>TL6700AF260QJ □□□□□: E-Switch □□□□□: SWITCH TACTILE SPST-NO 0.05A 12V □□□□□ □□□□□ □□: Out stock RFQ</p>
<p>TL6304BF200QJ □□□□□: E-Switch □□□□□: SWITCH TACTILE SPST-NO 0.05A 12V □□□□□ □□□□□ □□: Out stock RFQ</p>	<p>TL6700NF160QJ □□□□□: E-Switch □□□□□: SWITCH TACTILE SPST-NO 0.05A 12V □□□□□ □□□□□ □□: Out stock RFQ</p>